



www.hku.hk

PROGRAMMES AND STUDENTS

Higher Doctorate Degree (Enrollment in 2005/06)

Degrees	Number (in Headcount)
Doctor of Medicine	25
Master of Surgery	2
All Higher Doctorate	27

Regular Degree Programmes

Programmes Funded by the University Grants Committee

Number of Intakes in Headcount by Level of Studies in 2005/06

Level	Number (in Headcount)
Research Postgraduate	677
Taught Postgraduate	729
Undergraduate	2,852
All Levels	4,258

Total Headcount Enrollment in 2005/06

Headcount Enrollment	
Full-time	11,520
Part-time	1,156
All	12,676

2005/06 Headcount Enrollment by Faculty

Faculty	Research Postgraduate (Doctor of Philosophy)		Research Postgraduate (Master of Philosophy)		Taught Postgraduate		Undergraduate	
	Full-time	Part-time	Full-time	Part-time	Full-time	Part-time	Full-time	Part-time
Architecture	71	21	13	15	167	9	346	0
Arts	64	33	71	16	0	2	1,459	0
Business and Economics	57	8	14	1	0	0	1,433	0
Dentistry	24	10	4	0	0	0	252	0
Education	62	59	19	13	265	550	435	93
Engineering	215	33	118	6	0	0	1,397	0
Law	16	7	9	0	141	20	315	0
Medicine	198	41	150	14	13	0	1,378	0
Science	274	9	148	5	0	64	1,421	0
Social Sciences	76	52	45	5	71	70	779	0
All Faculties	1,057	273	591	75	657	715	9,215	93

Number of Students Enrolled in Headcount at All Levels of Studies in 2005/06

Faculty	Full-time	Part-time	All
Architecture	597	45	642
Arts	1,594	51	1,645
Business and Economics	1,504	9	1,513
Dentistry	280	10	290
Education	781	715	1,496
Engineering	1,730	39	1,769
Law	481	27	508
Medicine	1,739	55	1,794
Science	1,843	78	1,921
Social Sciences	971	127	1,098
All Faculties	11,520	1,156	12,676

Number of UGC-funded Programmes Offered in 2005/06

Taught Programmes	Full-time	Part-time	All
Taught Masters Programmes	10	13	23
Postgraduate Certificate / Diploma Programmes	3	2	5
Undergraduate Programmes	46	2	48
All Programmes	59	17	76

Number of Departments Offering Research Postgraduate Programmes

Doctor of Legal Studies (SJD)	1
Doctor of Philosophy (PhD)	57
Master of Philosophy (MPhil)	59

Note: Taught postgraduate programmes offered in both full-time and part-time modes are counted as separate programmes for the respective mode. In 2005/06, there were 6 such programmes. The number of SJD, PhD and MPhil programmes listed above is based on the disciplines / departments in which such programmes are offered.

Number of Non-local Students Enrolled in Regular Programmes by Country in 2005/06

Country	Research Postgraduate	Taught Postgraduate	Undergraduate	All Levels	%
Mainland China	716	21	400	1,137	85.6
Other Countries	114 (from 32 countries)	42 (from 21 countries)	35 (from 14 countries)	191 (from 41 countries)	14.4
All Countries	830	63	435	1,328	100.0

Undergraduate Students on Exchange Programmes

Number of Undergraduate Students on Exchange by Country in 2005/06		
Type/Country	Number of Overseas / Mainland Exchange Students Studying in HKU	Number of HKU Exchange Students Studying Overseas / in Mainland China
HKU Worldwide Undergraduate Exchange Programme (semester / full-year based)		
North America (Canada, United States of America)	190	120
Europe (Austria, Denmark, Finland, France, Germany, Netherlands, Sweden, United Kingdom)	109	87
Asia (Japan, Korea, Malaysia, Singapore)	43	59
Australia and New Zealand	38	35
Other Exchange Programmes		
Mainland China (semester based)	153	20
Mainland China (short-term based)	47	251
Other Countries (summer)	31	200
All Types / Countries	611	772

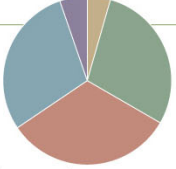
Professional and Continuing Education Programmes

(a) Number of Students Enrolled in Self-financed Programmes in 2005/06

Programme	Full-time	Part-time	All
Postgraduate Programmes	700	5,153	5,853
Undergraduate Programmes	114	2,162	2,276
All Programmes	814	7,315	8,129

(b) Enrollment in Local Programmes Run by HKU School of Professional and Continuing Education (HKU SPACE) in 2005/06

Programme	Enrollment
Postgraduate Programmes	5,130
Degree Programmes (including full-time degree programmes)	32,407
Sub-Degree Programmes	35,727
General / Short Courses (including non-award bearing professional courses)	32,684
Community College Programmes (full-time associate degree and higher diploma programmes)	5,760
All Local Programmes	111,708



(c) Enrollment in Mainland Programmes Run by HKU School of Professional and Continuing Education (HKU SPACE) in 2005/06

1,428

Outreach Degree Programmes

Number of Students Enrolled in Headcount in 2005/06	
HKU Master of Business Administration (International) Programme in Shanghai	523
HKU Master of Finance Programme in Shenzhen	56
HKU Master of Science in Construction Project Management Programme in Chongqing	35
HKU Master of Science in Real Estate Programme in Chongqing	26
HKU Master of Social Service Management Programme in Shanghai	37
HKU Master of Social Work Programme in Shanghai	26
All Programmes	703

HKU GRADUATES / ALUMNI

Cumulative Number of Alumni (at June 2006) **Around 114,000**

Number of Graduates of UGC-funded Programmes in 2004/05 by Faculty

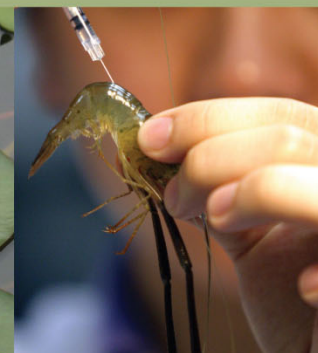
Faculty	Research Postgraduate	Masters	Postgraduate Diploma / Certificate	Undergraduate	All
Architecture	16	99	0	120	235
Arts	60	21	0	470	551
Business and Economics	12	0	0	386	398
Dentistry	8	8	0	51	67
Education	15	62	602	130	809
Engineering	94	135	0	485	714
Law	5	31	111	101	248
Medicine	86	5	0	255	346
Science	120	83	0	426	629
Social Sciences	34	63	0	191	288
All Faculties	450	507	713	2,615	4,285

Full-time Graduate Employment Survey: Percentage Distribution of 2005 Full-time Graduates by Destination (at December 2005)

Destination	Postgraduate(%)	Undergraduate(%)
Employed	90.3	78.6
Further Studies	6.6	20.1
Others	3.1	1.3

Full-time Graduate Employment Survey: Percentage Distribution of 2005 Full-time Graduates by Employment Sector (at December 2005)

Employment Sector	Postgraduate(%)	Undergraduate(%)
Civil Service	4.3	5.5
Education	42.1	8.0
Community, Social and Personal Services	7.1	21.4
Commerce and Industry	46.5	65.2



STAFF

Number of Staff in Headcount (at December 31, 2005)

Type of Staff	REGULAR	TEMPORARY			
	Full-time	Full-time	Part-time	Honorary / Visiting	All Temporary
Teaching Staff	1,124	85	66	1,254	1,405
Chair Professors	70	1	0	365	366
Teachers (Professor, Reader, Associate Professor, Senior Lecturer, Assistant Professor, Lecturer and Assistant Lecturer)	834	8	5	761	774
Teaching Support Staff (Tutor, Instructor, Demonstrator)	220	76	61	128	265
Research Staff	582	438	47	146	631
Technical Staff	835	197	25	7	229
Administrative and Support Staff (Including Clerical and Secretarial Staff)	1,642	132	58	0	190
Others (Including Minor Staff, e.g. Labourers, Artisans)	338	5	22	0	27
All Staff	4,521	857	218	1,407	2,482

Note: Staff of University Companies are excluded in the staff numbers listed above.

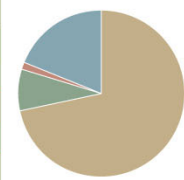
RESEARCH

Research Funding Received in 2004/05

Fund Source	HK\$ (in Million)	%
Block Grant from University Grants Committee	846.0	64.0
Research Grants Council / University Grants Committee	158.3	12.0
Competitive Earmarked Research Grants	125.9	9.5
Others	32.4	2.5
Research Grants Council Direct Allocation	14.5	1.1
Other External Sources (Including Government, Private, Industry)	257.5	19.5
University of Hong Kong Foundation Allocation	23.2	1.8
Income from Research-Related Endowment Funds	22.7	1.7
Total Funding Received	1,322.2	100.0

Research Output in 2004/05 by Type of Research Activities

Type of Research Activities	Number	%
Academic Research, Refereed	5,046	71.8
Academic Research, Not Refereed	569	8.1
Contract Research	91	1.3
Other Output	1,325	18.8
All	7,031	100.0



Ongoing and New Research Projects in 2004/05 by Discipline

Discipline	Number of Projects	%	Amount of Awards (in HK\$)	%
Actuarial Science and Mathematical Science	85	3.6	\$20,611,750	1.9
Architectural and Town Planning	88	3.7	\$26,849,410	2.5
Arts and Designs	10	0.4	\$1,641,358	0.2
Biological, Physical and Marine Science	375	16.0	\$208,977,377	19.3
Business and Management Studies	64	2.7	\$18,102,083	1.7
Civil and Structural Engineering	96	4.1	\$65,972,837	6.1
Education	159	6.8	\$53,919,457	5.0
Electrical and Electronic Engineering	108	4.6	\$82,461,136	7.6
History and Philosophy	6	0.3	\$429,542	0.04
Information Technology, E-Business Technology and Computer Science	64	2.7	\$81,922,437	7.6
Languages	53	2.3	\$14,156,357	1.3
Law	30	1.3	\$4,976,997	0.5
Mechanical, Production and Industrial Engineering	150	6.4	\$38,130,031	3.5
Medicine, Dentistry and Health	894	38.1	\$413,270,763	38.2
Social Sciences	166	7.1	\$51,677,687	4.8
All Disciplines	2,348	100.0	\$1,083,099,222	100.0

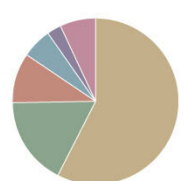
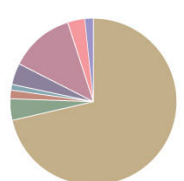
Joint Research Laboratories

Location of Laboratory	Beijing	Canada	Guangzhou	Hong Kong	Shanghai	Shenzhen	UK	USA	All
Number of Laboratories	1	1	2	5	5	2	1	3	20

FINANCE

2004/05 Income and Expenditure

Income	HK\$'000	%	Expenditure	HK\$'000	%
Government Subventions	2,562,362	57.7	Learning and Research:	3,159,907	78.4
Tuition, Programmes and Other Fees	758,545	17.1	Instruction and Research	2,880,526	71.5
Interest and Investment Income	440,483	9.9	Library	171,415	4.3
Donations and Benefactions	252,841	5.7	Central Computing Facilities	62,287	1.5
Auxiliary Services	131,143	3.0	Other Academic Services	45,679	1.1
Other Income	298,091	6.7	Institutional Support:	869,695	21.6
Total	4,443,465	100.0	Management and General	168,302	4.2
			Premises and Related Expenses	506,665	12.6
			Student and General Education Services	134,655	3.3
			Other Activities	60,073	1.5
			Total	4,029,602	100.0

LIBRARIES RESOURCES, IT FACILITIES AND SERVICES

Libraries (at June 30, 2006)	
	Number
Number of Registered Library Users	95,947
Books and Library Materials	
Number of Bound Volumes	2.47 millions
Number of Periodical Titles	102,835
Number of Non-print Items	1,848,286
Number of Electronic Titles	
on CD-ROM	7,833
Web-based	1,065,929
Number of Rare Books Collections (Volumes)	21,242

Library IT Facilities / Services	
	Number
Number of Public Computers	370
Number of ACEnet Connection Points	475
Number of Wireless Network Access Points	45
Access to Homepage (July 1, 2005 - June 30, 2006)	193,609,547 hits
Number of Library Instructions, IT Courses and Orientations (July 1, 2005 - June 30, 2006)	694
Number of Attendances at Library Instructions, IT Courses and Orientations (July 1, 2005 - June 30, 2006)	16,083

UNIVERSITY MUSEUM AND ART GALLERY

University Museum and Art Gallery	
	Number
Number of Art Exhibitions Organized Since Inception in 1976 to May 2006	235
Number of Art Exhibitions Held Annually	About 20
Internationally Famous Collections:	
Tang Dynasty Underglazed - Blue Waterpot	
Yuan Dynasty Nestorian Bronze Crosses	

COMPUTING AND NETWORK RESOURCES (2006)

Computing and Network Resources	
	Number
Number of Wired Network Access Points	25,100
Number of Wireless Network Access Points	620
Number of E-mail Addresses for Staff, Students and Graduates	73,000
Total Bandwidth for Direct Connection to The Internet and Internet 2	300 (in Mbps)
Aggregated Central Computing Power for Teaching and Research Purposes (Theoretical Peak Computing Speed)	2,520 (in GFLOPS)

SPACE

Distribution of Space by Category Based on Total Gross Covered Floor Area at June 2006:		
	Gross Covered Floor Area (in m ²)	%
Academic Space	227,885	39.5
Central and Departmental Libraries	43,800	7.6
Central Administration and Maintenance	22,765	4.0
Student and Staff Amenities	30,749	5.3
Sports Facilities	12,508	2.2
Student Halls of Residence and Staff Quarters	230,690	40.0
Others (Including HKU Museum and HKU Press)	7,922	1.4
All	576,319	100.0

School of Professional and Continuing Education	28,327 m²
Gross Covered Floor Area at June 2006:	

Land Holdings	
Sites	Lot Area (in Hectares)
Hong Kong Island	
Main Campus	14.5
Medical Campus	4.1
Other Sites on Pok Fu Lam Road	20.9
New Territories	
Kadoorie Agricultural Research Centre	9.6
All	49.1

Halls and Student Residences	
Number of Places	Number
Existing	4,646
Planned	1,800

UNIVERSITY DIRECT AND INDIRECT SUBSIDIARIES

University Companies by Service Type	
Consultancy	Education
ETI Consulting Ltd.	HKU School of Professional and Continuing Education
Policy 21 Limited	Poon Kam Kai Institute of Management
Enterprise	Technology
HKU Enterprise Ltd.	HKU Pasteur Research Centre Ltd.
Versitech Ltd.	

Note: Some percentages or figures do not add up to 100% or total owing to rounding.

QuickStats is prepared by the External Relations Office and the figures are supplied by the Management Information Unit, Vice-Chancellor's Office.
Date of Issue: October 2006